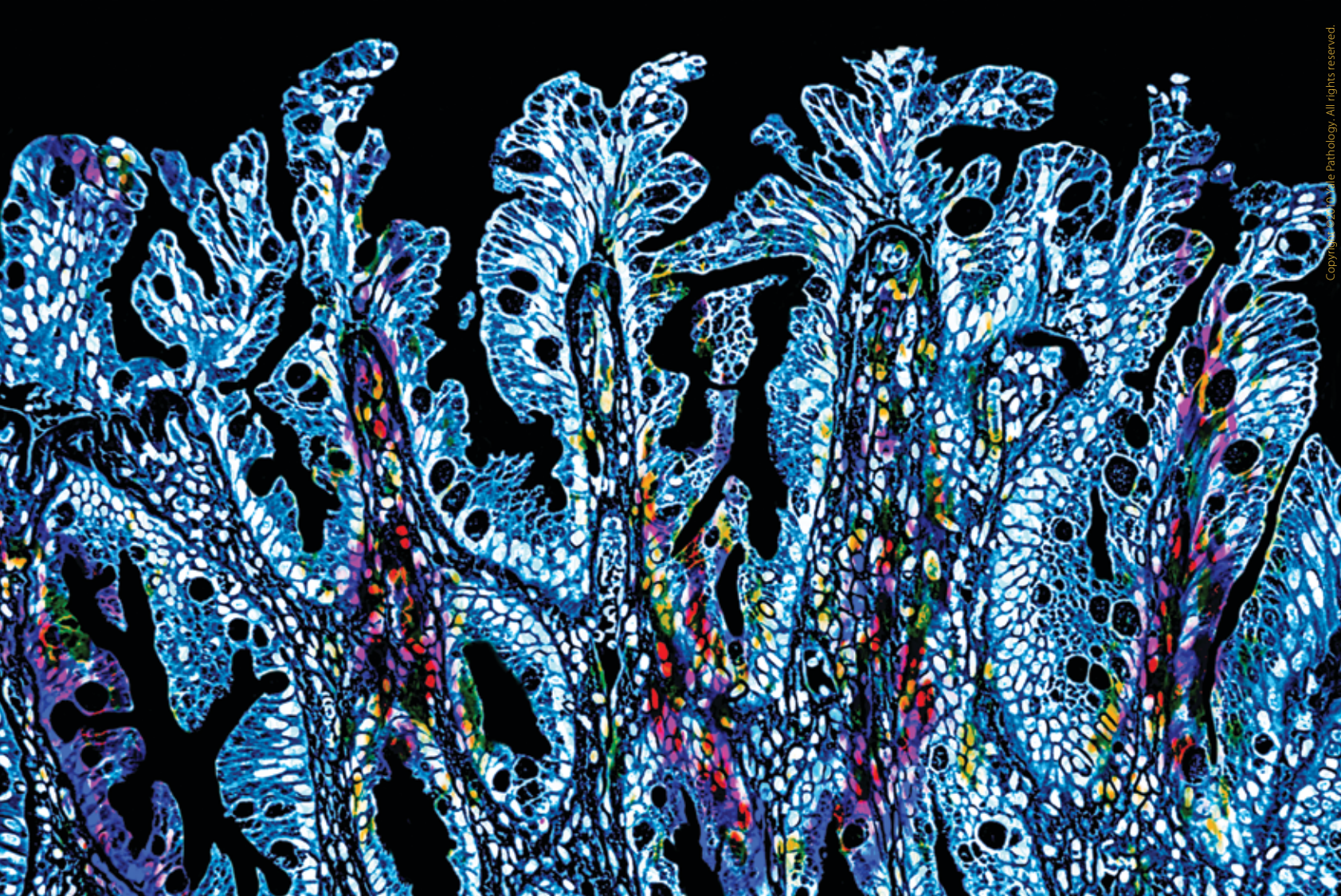


Gastrointestinal Pathology



Copyright © Yale Pathology. All rights reserved.

The Yale Gastrointestinal Pathology Program offers comprehensive diagnostic services for biopsies and resections from the gastrointestinal tract, liver, biliary tree, and pancreas, and specialized expertise in the pathologic diagnosis of inflammatory and neoplastic conditions. Our diagnostic techniques include routine histopathology, immunohistochemistry, in situ hybridization, molecular diagnostics, flow cytometry, and electron microscopy. The GI Pathology Program also plays a critical role in the liver transplant service.



Dhanpat Jain, M.B.B.S., M.D.
Associate Professor of Pathology and Medicine (Digestive Diseases)
Director, Gastrointestinal Pathology Program

Marie E. Robert, M.D.
Professor of Pathology and Medicine (Digestive Diseases)

Liming Hao, M.D.
Associate Professor of Pathology

Bart Kenney, M.D.
Assistant Professor of Pathology

Kisha A. Mitchell, M.D.
Assistant Professor of Pathology

Zenta Walther, M.D., Ph.D.
Assistant Professor of Pathology

A. Brian West, M.D.
Professor and Vice Chair of Pathology
Director, Anatomical Pathology

