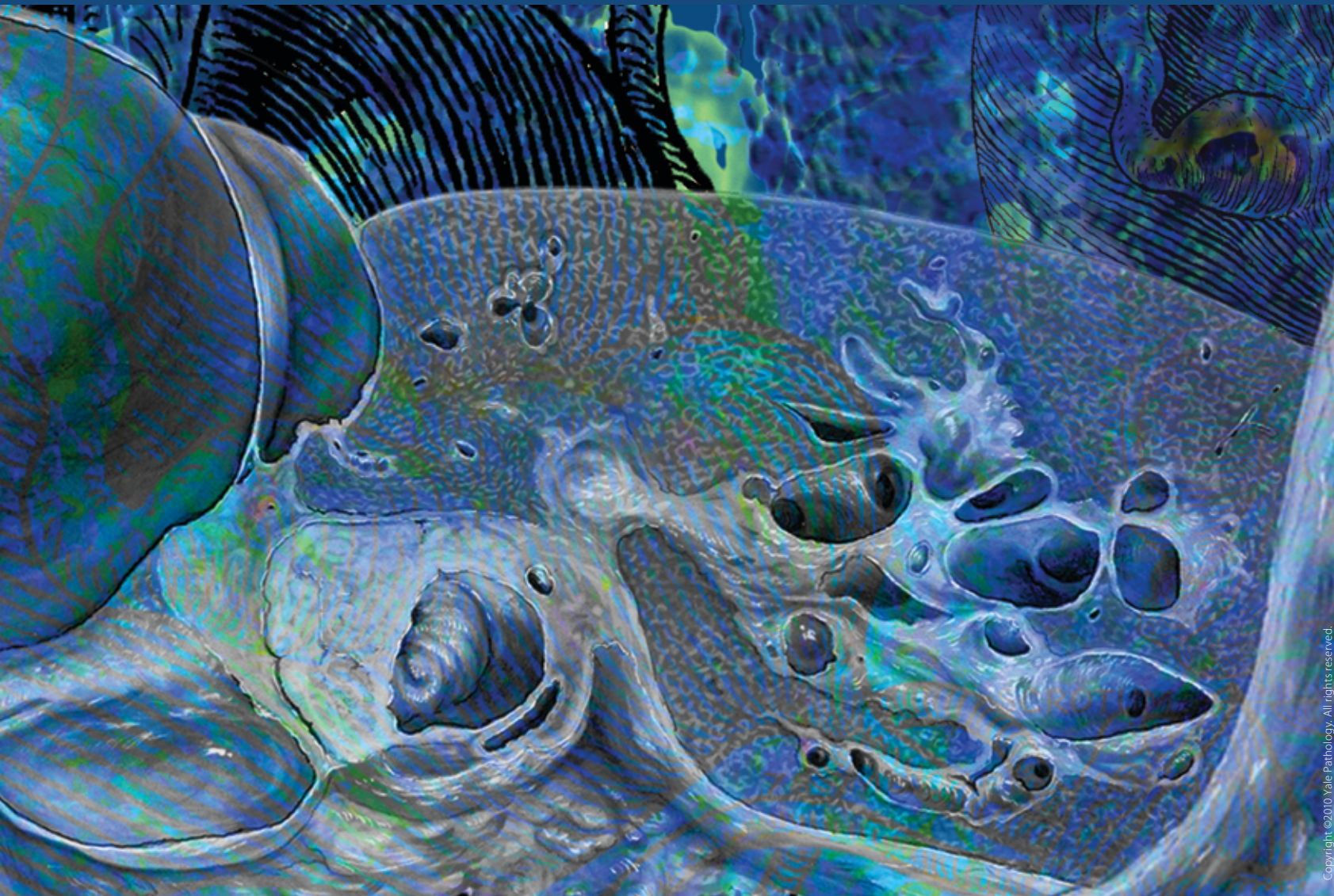


# Urologic Pathology



The Yale Program in Urologic Pathology offers comprehensive diagnostic services on biopsies and resections from the kidney, ureter, bladder, urethra, prostate, and testis. Results of comprehensive examinations are rendered with an emphasis on prognosis and prediction of the response to therapy. For that we employ our state-of-the-art diagnostic facilities, which include laboratories specializing in molecular diagnostics, cytopathology, immunohistochemistry, flow cytometry, electronmicroscopy, and cytogenetics.



G. Kenneth Haines, III, M.D.  
Associate Professor of Pathology  
Co-Director, Medical Studies  
Director, General Pathology Service

Adebowale Adeniran, M.D.  
Assistant Professor of Pathology

Demetrios T. Braddock, M.D., Ph.D.  
Associate Professor of Pathology

Guoping Cai, M.D.  
Assistant Professor of Pathology

José Costa, M.D.  
Professor of Pathology and Medicine (Oncology)  
Director, Translational Diagnostics  
Director, Musculoskeletal Tumor Program

Angelique Levi, M.D.  
Assistant Professor of Pathology

Vinita Parkash, M.D.  
Associate Professor of Pathology  
Director of Surgical Pathology, Bridgeport Hospital

Copyright ©2010 Yale Pathology. All rights reserved.

