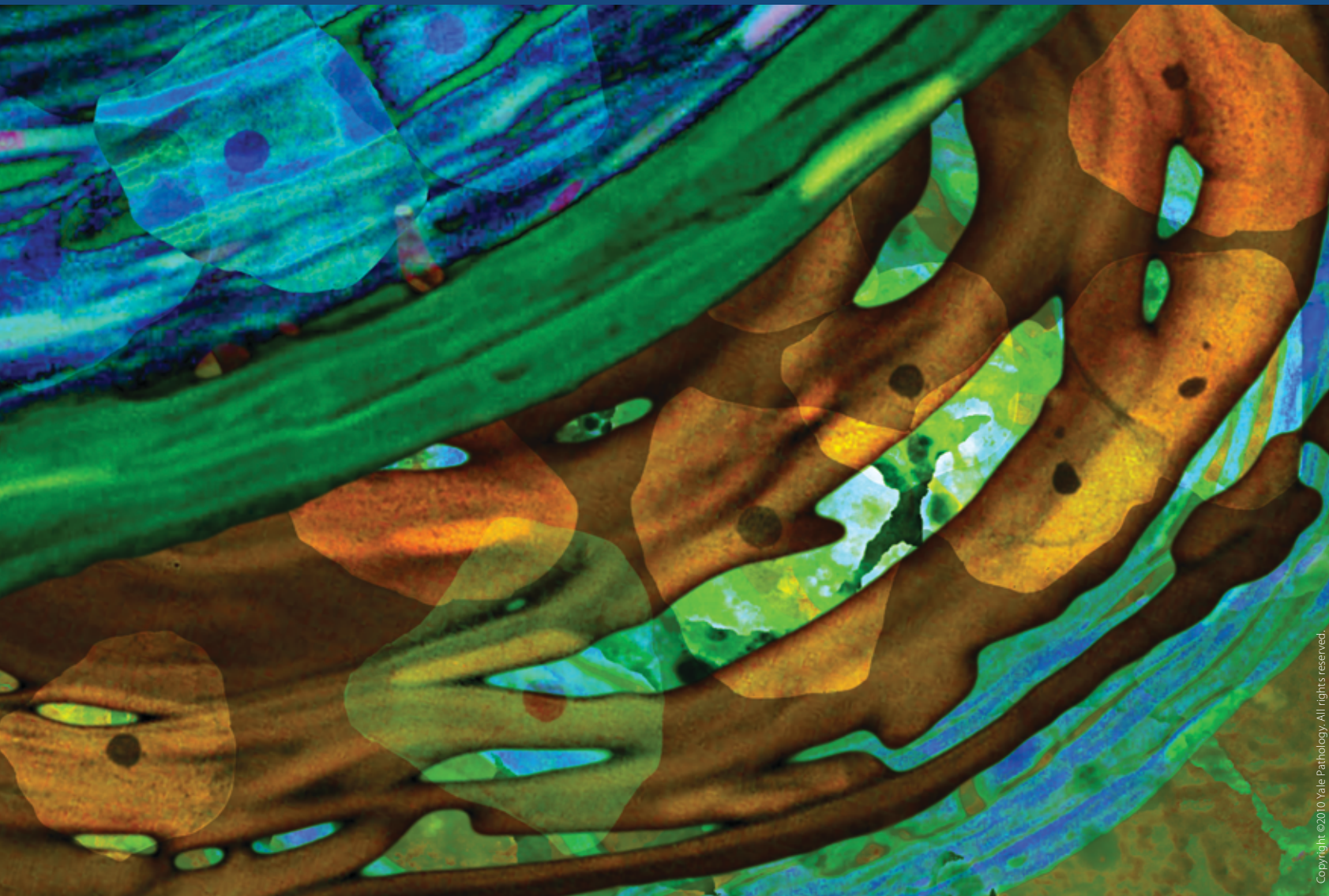


Cytopathology



The Yale Cytopathology Program operates a comprehensive laboratory that offers state-of-the-art facilities and equipment and a wide variety of testing procedures. The Cytopathology Service is responsible for rendering consultative reports derived from the examination of cytological preparations. These include samples for the screening of cervical cancer and diagnostic specimens obtained from biological fluids, scrapings, or by Fine Needle Aspiration (FNA). We also use modern molecular technologies to detect and type human papillomaviruses and to reveal molecular alterations characteristic of tumor cells.



David Chhieng, M.D.
Professor of Pathology and Director, Cytology

Adebowale Adeniran, M.D.
Assistant Professor of Pathology

Guoping Cai, M.D.
Assistant Professor of Pathology

Akosua Domfeh, M.D.
Assistant Professor of Pathology

Malini Harigopal, M.D.
Assistant Professor of Pathology

Diane Kowalski, M.D.
Associate Professor of Pathology and Surgery (Otolaryngology)

Angelique Levi, M.D.
Assistant Professor of Pathology

Constantine Theoharis, M.D.
Assistant Professor of Pathology

Copyright ©2010 Yale Pathology. All rights reserved.

