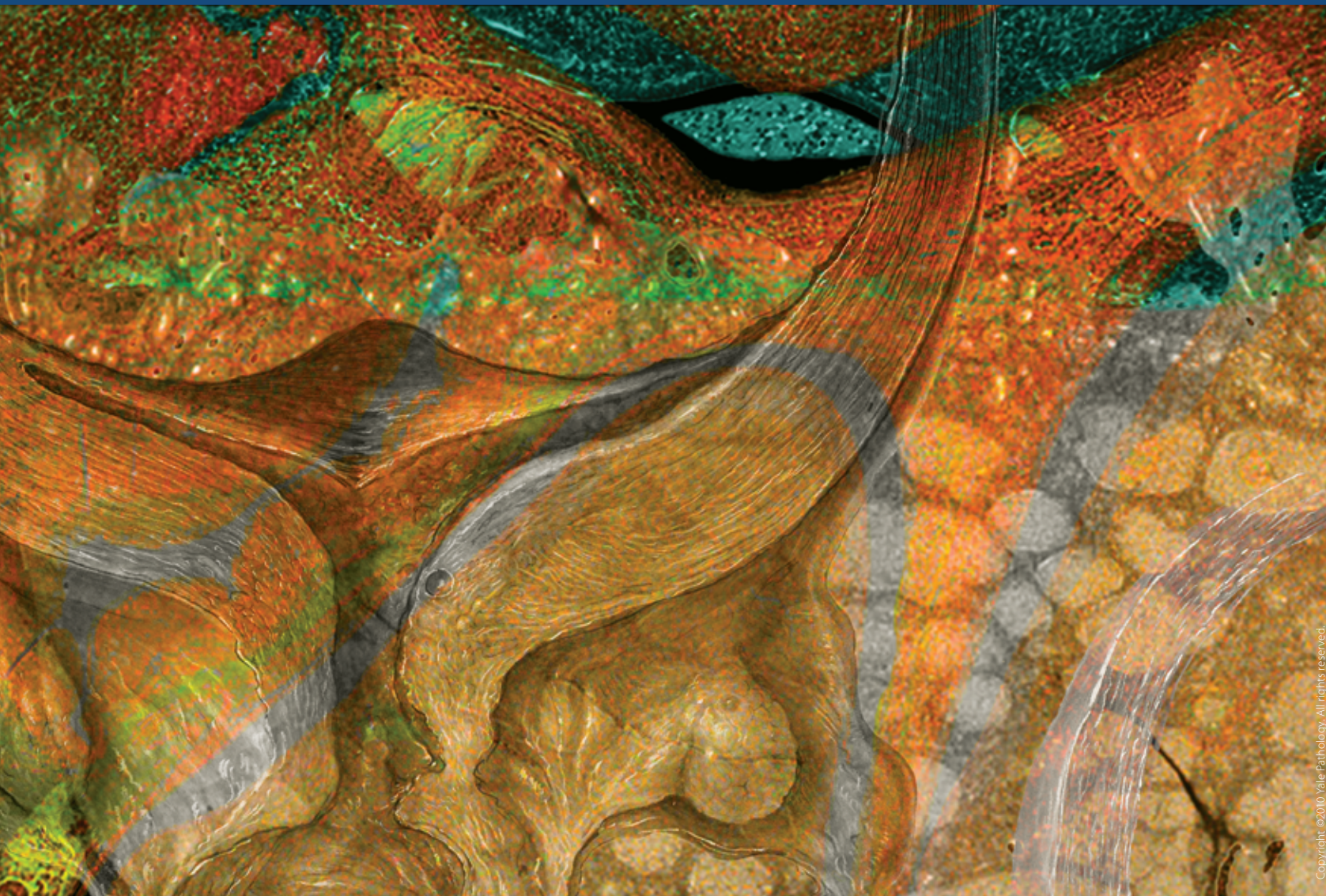


Gynecologic Pathology



The **Gynecologic Pathology** specialists within the Women's Health Program in Pathology at Yale are a premier resource for the diagnosis and study of diseases of the female genital tract, receiving diagnostically challenging cases from around the world. In addition to performing routine evaluation of gross and microscopic specimens, our attending pathologists in Gynecologic Pathology have the capability to carry out, when indicated, electron microscopic, immunohistochemical, and sophisticated molecular studies.



Fattaneh A. Tavassoli, M.D.
Professor of Pathology and Obstetrics, Gynecology,
and Reproductive Sciences
Director, Pathology Women's Health Program

Veerle Bossuyt, M.D.
Assistant Professor of Pathology

Natalia Buza, M.D.
Assistant Professor of Pathology

José Costa, M.D.
Professor of Pathology and Medicine (Oncology)
Director, Translational Diagnostics
Director, Musculoskeletal Tumor Program

G. Kenneth Haines, III, M.D.
Associate Professor of Pathology
Co-Director, Medical Studies
Director, General Pathology Service

Pei Hui, M.D., Ph.D.
Associate Professor of Pathology
Director, Clinical Molecular Diagnostics Laboratory

Sihem Khelifa, M.D.
Assistant Professor of Pathology

Ozlen Saglam, M.D.
Assistant Professor of Pathology

